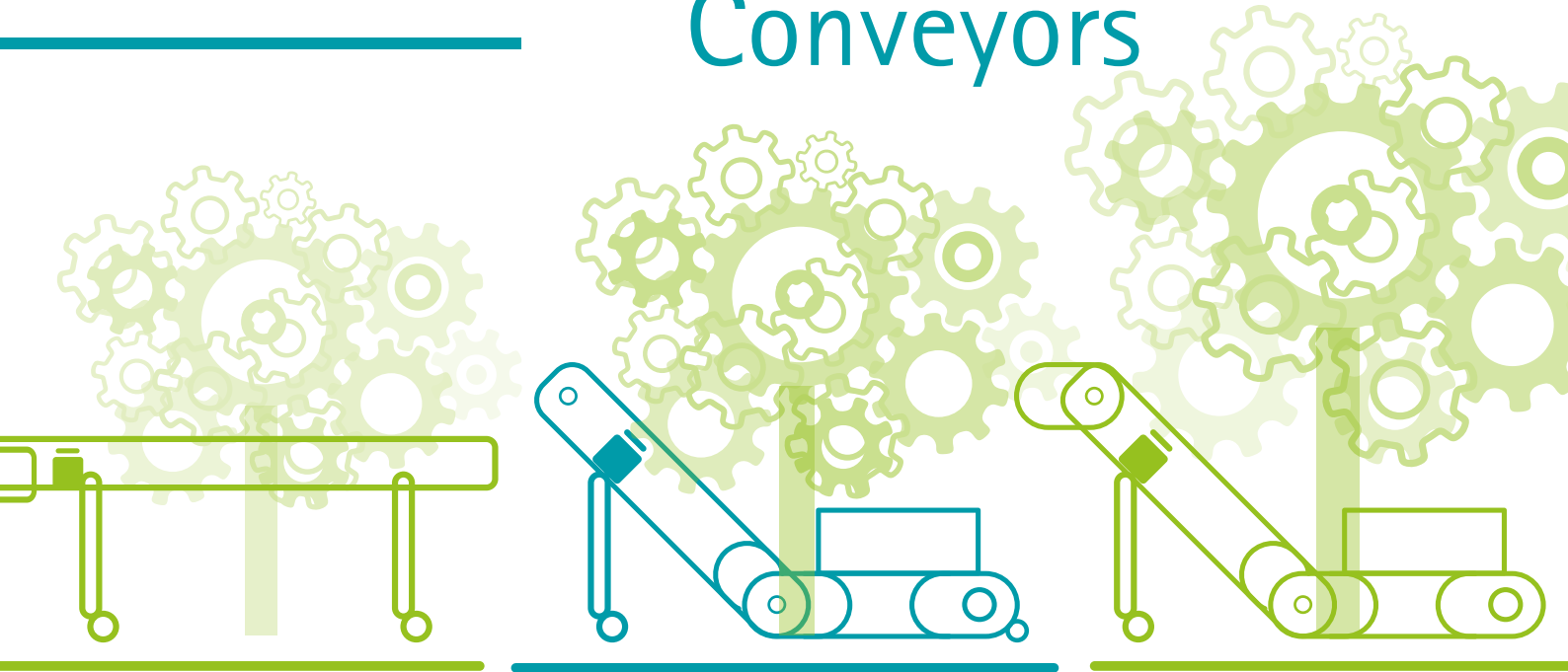




VISIT US  
HALL 10, STAND E31  
OCTOBER 19-26, 2022

# MB Conveyors

GREEN (R)EVOLUTION



## Green Deal



### MB Conveyors takes its sustainable approach to K2022

*The most important appointment of the plastics processing industry, K 2022, will take place in Düsseldorf, from 19th to 26th of October.*

*MB Conveyors will carry on its innovative process of reviewing and enhancing the sustainability of its products, which is reflected in the communication that will characterize our presence in this important event, where we will have a brand new booth in **HALL 10, STAND E31**.*

#### **The key points of MB Conveyor's presence at K2022:**

- News and innovations
- Drive units
- Drive rollers
- Belt supporting system
- Definition of conveyors' application range

## N-DUCK, E-DUCK and TURNTABLES

These products have been reviewed both from a mechanical and electrical point of view, improving their performance, lightening the structures where possible, and applying all the most recent improvements made to the product range in terms of consumption, sustainability and duration



## New flat conveyor mod. T100

- Flat conveyor with aluminum profile h 100 mm, equipped with standard 0.09 kW drive unit
- Adaptable and functional, especially suitable for small dimension applications

### T100 | Flat Conveyor

↓ Length

Da 1 a 6 m

↓ Capacity

Totale KG. 50

**DRIVE UNIT**

- Power: 0.09 kW
- Speed: 5,5 m / min fixed
- Voltage: 400V / 50 HZ

**CONVEYOR BELT**

- PU coating hardness: 92 Shore A
- Contact temperature: -10 + 110°C
- Operating temperature: -10 + 90°C

<b>A</b>	<b>B</b>	<b>H</b>
min 100 mm	min 600 mm	min 200 mm
max 600 mm	max 6000 mm	max 2000 mm



## MB Wave Control

- Three-phase inverter for speed adjustment on MB conveyors
- Adjustment range: 15-80 Hz.

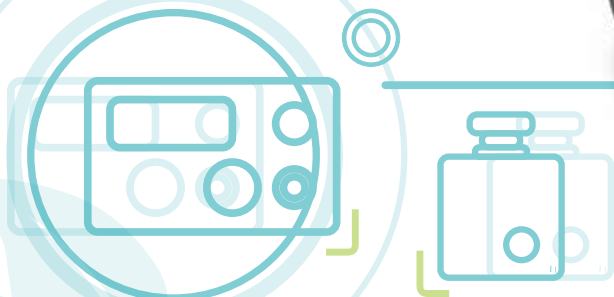
## Top Control 4.0

a new version of the most advanced of MB's control panels, in which:

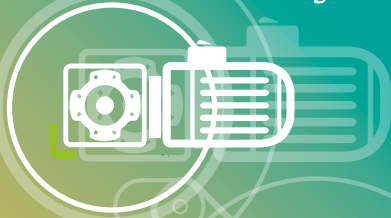
- Protection against static charges has been improved
- Containment box has been redesigned, improving strength and at the same time creating more space for internal layouts.

### New optional:

- Wi-fi and RJ45 for integration with company communication network
- Possibility of remote monitoring and programming via app.



◎ **New drive unit configuration**



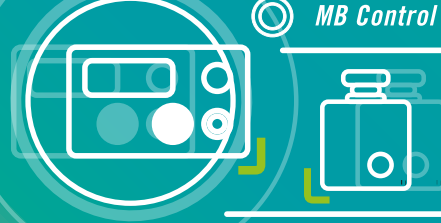
◎ **New belt specifications**



◎ **Die-cast aluminum housings**



◎ **MB Control Panels**

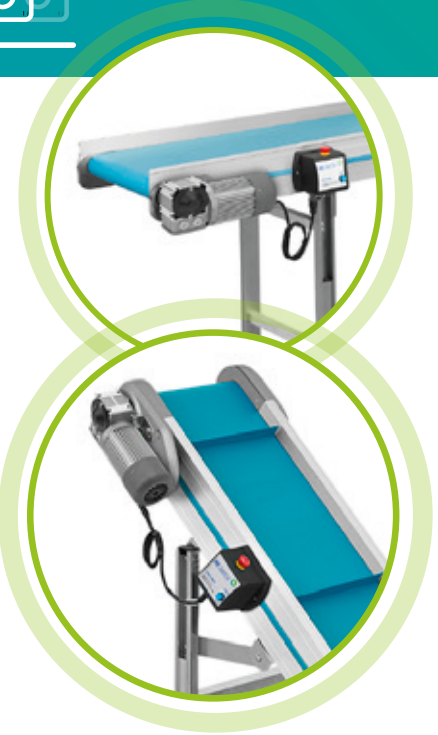


**A COMMITMENT TO IMPROVE  
Material, Design & Technology**

- Quality & Reliability
- Duration over time
- Efficiency and Performance
- Functionality

## Drive units

- The power of most our standard drive units has been reduced, over the last 3 years, by approx. 30%
- **New goal:** improve efficiency
- At our booth in K2022, we will exhibit some conveyors equipped with a new drive unit - with **efficiency 64%**, compared to current 46%
- 18% more efficiency means, for the same performance, a **lower electrical absorption**
- The positive results of our tests lead us to consider to extend this improvement to our full range of products, in the future.



## Drive rollers

Where possible, we opted for a decrease in the drive roller's diameter, compensated by a **rubber coating process**. This allowed us to:

- lighten the structure, without affecting its robustness
- get an optimal traction of the belt with a lower tension factor, with related advantages from a mechanical and product duration point of view

## Belt supporting system

We improved the belt supporting system, passing from a sliding system to a **rolling support system**:

- Where the belt was supported with plastic skids, it is now supported by specially made, high-sliding small rollers.
- This innovation not only preserves the integrity of the belt, but also implies a decisive decrease in the power required for its movement



## Definition of conveyor's application range

This point is maybe the most strategic goal of our work: considering the wide range of our products, it becomes increasingly necessary to **define their application according to their use**. This process has already begun in 2019, when we developed our new "Product Overview" with this idea in mind. **The main goal is to manufacture what is necessary, getting rid of the unnecessary:**

### 1) Conveyors with direction change

**N-series** is integrated with two different conveyor models:

- **SMART series**, for conveyors with small dimensions → suitable when compact size is crucial
- **CP 2021 series**, for conveyors with bigger dimensions → strategic for bigger size



### 2) Flat conveyors

**PA110 series** is integrated with two different conveyor models:

- New mod. **T100**, for conveyors with small dimensions → suitable when compact size is crucial
- Mod. **PA 180**, for conveyors with bigger dimensions → strategic for bigger size

